

Phenotyping dividing cells in mouse models of neurodegenerative basal ganglia diseases.

AUTHOR(S)

Arthur Smardencas, Kerelos Rizkalla, Hyun Ah Kim, Jim Massalas, Claire O'Leary, Michelle E. Ehrlich, Günter Schütz, Andrew J. Lawrence, John Drago

CITATION

Smardencas, Arthur; Rizkalla, Kerelos; Kim, Hyun Ah; Massalas, Jim; O'Leary, Claire; Ehrlich, Michelle E.; et al. (2013): Phenotyping dividing cells in mouse models of neurodegenerative basal ganglia diseases.. Royal College of Surgeons in Ireland. Journal contribution. <https://hdl.handle.net/10779/rcsi.10783313.v1>

HANDLE

[10779/rcsi.10783313.v1](https://hdl.handle.net/10779/rcsi.10783313.v1)

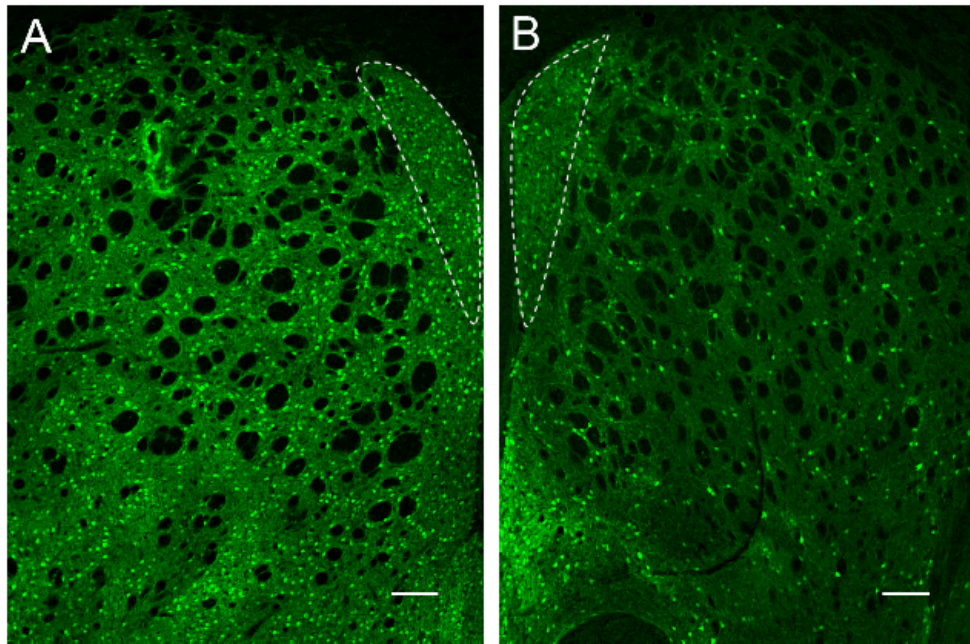
LICENCE

CC BY-NC-ND 4.0

This work is made available under the above open licence by RCSI and has been printed from <https://repository.rcsi.com>. For more information please contact repository@rcsi.com

URL

https://repository.rcsi.com/articles/journal_contribution/Phenotyping_dividing_cells_in_mouse_models_of_neurodegenerative_basal_ganglia_diseases_/10783313/1



Photomicrograph of striatal line Drd1a-GFP WT control mouse brain (GFP cells labeled green) (A) and striatal line mutant mice on a GFP genetic background (B). Drd1a-GFP-positive cells are abundantly expressed throughout the striatum in the GFP-control mouse brain and significantly lost in GFP-striatal mouse brain. Dotted line outlines the dorsomedial striatum that remains relatively densely packed with Drd1a-GFP-positive cells in both lines. Scale bar = 100 μ m.