

Low cleaved caspase-7 levels indicate unfavourable outcome across all breast cancers.

AUTHOR(S)

Andreas U Lindner, Federico Lucantoni, Damir Varešlija, Alexa Resler, Brona M Murphy, William M Gallagher, Arnold D K Hill, Leonie S. Young, Jochen H.M. Prehn

CITATION

Lindner, Andreas U; Lucantoni, Federico; Varešlija, Damir; Resler, Alexa; Murphy, Brona M; Gallagher, William M; et al. (2018): Low cleaved caspase-7 levels indicate unfavourable outcome across all breast cancers.. Royal College of Surgeons in Ireland. Journal contribution. <https://hdl.handle.net/10779/rcsi.10790771.v1>

HANDLE

[10779/rcsi.10790771.v1](https://hdl.handle.net/10779/rcsi.10790771.v1)

LICENCE

CC BY-NC-SA 4.0

This work is made available under the above open licence by RCSI and has been printed from <https://repository.rcsi.com>. For more information please contact repository@rcsi.com

URL

https://repository.rcsi.com/articles/journal_contribution/Low_cleaved_caspase-7_levels_indicate_unfavourable_outcome_across_all_breast_cancers_/10790771/1

Low BCL-2 and cleaved caspase-7 indicate unfavourable outcome across all breast cancers

Andreas U. Lindner^{1,2}, Federico Lucantoni^{1,2}, Damir Varešlija³, Alexa Resler^{1,2}, Brona M. Murphy^{1,2}, William M. Gallagher⁴, Arnold D.K. Hill³, Leonie S. Young³, and Jochen H.M. Prehn^{*1,2}

¹Centre for Systems Medicine, ²Department of Physiology and Medical Physics, ³Department of Surgery, Royal College of Surgeons in Ireland, Dublin 2, Ireland. ⁴Cancer Biology and Therapeutics Laboratory, UCD School of Biomolecular and Biomedical Science, UCD Conway Institute, University College Dublin, Belfield, Dublin 4, Ireland.

Correspondence: Prof. Jochen H. M. Prehn, RCSI Centre for Systems Medicine and Department of Physiology and Medical Physics, Royal College of Surgeons in Ireland, 123 St. Stephen's Green, Dublin 2, Ireland. Tel.: +353 1 402 2255; Fax: +353 1 402 2447; E-mail: prehn@rcsi.ie

Running Title: BCL-2 and cleaved caspase-7 as breast cancer biomarkers

Keywords: Breast cancer, BCL-2 proteins, apoptosis, cell death, caspases, systems biology

Abstract

Elevated levels of the anti-apoptotic BCL2 protein associate with favourable outcome in breast cancer. We investigated whether executioner caspase activation downstream of mitochondrial apoptosis was associated with, or independent of BCL2's prognostic signature in breast cancer. Levels of BCL2 family proteins were quantified in triple negative breast cancer (TNBC) samples, and utilised to calculate BCL2 profiles of 845 breast cancer patients. Biomarkers including single apoptosis proteins and network-enriched apoptosis systems signatures were evaluated using uni- and multivariate Cox-models. In both TNBC and non-TNBC breast cancer, the anti-apoptotic BCL2 protein was particularly abundant when compared to other solid tumours. High BCL2 protein levels were prognostic of favourable outcome across all breast cancers (HR 0.4, 95% CI 0.2-0.6, Wald $p < 0.0001$). Although BCL2 and cleaved caspase-7 levels correlated negatively, elevated cleaved caspase-7 levels were also associated with favourable outcome (HR 0.4, 95% CI 0.3-0.7, Wald $p = 0.001$). A combination of low BCL2 and low cleaved caspase-7 protein levels was highly prognostic of unfavourable outcome across all breast cancers (HR 11.29, 95% CI 2.20-58.23, Wald $p = 0.01$). A combination of BCL2 and cleaved caspase-7 levels is a promising prognostic biomarker in breast cancer patients.

Introduction

The ability of cancer cells to evade apoptosis is believed to play a fundamental role in carcinogenesis [1] and resistance to chemo- and radiotherapy [2]. The BCL-2 family of proteins are gatekeepers of the so-called mitochondrial apoptosis pathway and either promote or inhibit apoptosis [3]. Caspase-3 and caspase-7 represent the main executioners of mitochondrial apoptosis [4]. Cancer cells overexpressing anti-apoptotic BCL2 family proteins including BCL2, BCL(X)L and MCL1 have a reduced ability to activate the mitochondrial apoptosis pathway and show an increased resistance to chemo- and radiotherapy [5, 6]. Due to the complexity of BCL2 protein interactions and redundancies in the BCL-2 signalling pathway, individual BCL-2 family proteins only have limited prognostic power in most cancers [7-9]. For this reason, we recently the computational model, DR_MOMP that describes BCL-2 signalling quantitatively and holistically [10]. Both preclinical and clinical studies demonstrated that such systems analysis was capable of delivering a powerful prognostic tool, superior to single or combinatorial biomarker approaches [10-12]. DR_MOMP is an ordinary differential equation-based computational model of BAX- and BAK-controlled mitochondrial outer membrane permeabilisation (MOMP) during apoptosis. It uses levels of pro-apoptotic BAK and BAX and anti-apoptotic BCL2, BCL(X)L and MCL1 as input, and delivers a single value ('stress' dose) that indicates the estimated sensitivity of cancer cells to activate the mitochondrial apoptosis pathway [10]. Previous studies employing quantitative Western blotting [10, 13] or reverse protein phase array (RPPA)-based protein quantification [11] demonstrated a highly prognostic association of high stress doses with unfavourable clinical outcome in patients with colorectal cancer, independent of other (histo)pathological or molecular risk factors including TNM staging [11].

Expression levels of the anti-apoptotic BCL2 protein, as a single biomarker or as part of transcriptome-based risk scores, has been repeatedly identified as a prognostic biomarker in breast cancer, with high levels of BCL2 counter-intuitively associated with favourable prognosis in patients [14-17]. High BCL2 expression is particularly observed in oestrogen and progesterone receptor (ER/PR)-positive breast cancer [18, 19] that shows better overall survival (OS) compared to ER/PR-negative or triple negative breast cancer (TNBC) [20]. BCL-2 has been identified as a transcriptional target of oestrogen signalling [21]. Of note, BCL2 signalling is increasingly linked to other non-apoptotic processes, including regulation of bioenergetics, cell proliferation and gene expression [22-26]. The aim of this study was therefore to quantitatively explore whether individual BCL2 proteins or a systems analysis of BCL-2 family proteins delivers prognostic signatures in breast cancer, whether

such signatures are breast cancer subtype-specific, and whether these signatures are related to executioner caspase activation as a read-out of the mitochondrial apoptosis pathway.

Materials and methods

Irish Cancer Society BREAST-PREDICT / National Breast Cancer Resource cohort

Fresh frozen primary cancer samples ($n = 25$) of non-metastatic female TNBC patients (5-year disease related survival 76% and recurrence rate 32%) were obtained from Beaumont Hospital, Dublin, Ireland between 2004–2013. Nineteen samples remained after quality control. Pathological stage was determined using the American Joint Committee on Cancer (AJCC) TNM classification system. Clinical follow-up [disease-free survival (DFS) and breast cancer-related overall survival (OS)] was obtained through medical record review. Informed consents were collected following ethical approval from Beaumont Hospital Medical Research Ethics Committee. Patients' clinical characteristics are provided in supplementary tables S1 and S2.

TCGA cohort

The data for protein levels (reverse phase protein array, RPPA), mRNA expressions (mRNA SeqV2), somatic mutations (IlluminaHiSeq) and clinical follow-up of $n = 845$ patients were accessed from The Cancer Genome Atlas (TCGA) project (20 May 2016). 74 patients were removed from the survival analysis due to history of another malignancy ($n = 53$), follow-up time ≤ 0 days ($n = 10$), or insufficient information on tumour staging ($n = 13$). Detailed patient characteristics are provided in supplementary tables S2 and S3.

BCL2 profiling by quantitative Western blotting

Quantitative Western blotting of fresh-frozen tissue protein lysates was performed as previously described using HeLa cells as a standard for which absolute levels of BCL-2 family proteins BCL2, BCL(X)L, MCL-1, BAX and BAK were determined previously [10]. HeLa cells were collected and lysed in RIPA buffer (150 mM NaCl, 1.0% IGEPAL® CA-630, 0.5% sodium deoxycholate, 0.1% SDS, 50 mM Tris, pH 8.0, Sigma protease and phosphatase inhibitors mix 1:100). Patient tissue was lysed in 500 μ L ice-cold buffer [50 mmol/L HEPES (pH 7.5), 150 mmol/L NaCl, 5 mmol/L Na-EDTA] and protease inhibitor cocktail and homogenized on ice. Samples were centrifuged at $14,000 \times g$ for 10 minutes, supernatant collected and stored at -80°C . All densitometry analyses was performed with ImageJ [10, 13]. Protein levels were normalised to HeLa cells to calculate absolute

protein levels in patient tissue. Primary antibodies to MCL1 (1:1000; BD Biosciences), BCL2 (1:100; Santa Cruz Biotechnology), BCL(X)L (1:250; Santa Cruz Biotechnology), anti- β -actin (A1978, Sigma Aldrich, St. Louis, MO, USA, 1 in 7500), and α -tubulin (1:5,000; Sigma Aldrich) were mouse monoclonal. Antibodies to BAK (1:250; Santa Cruz Biotechnology) and BAX (1:1,000; Upstate Biotechnology) were rabbit polyclonal. The horseradish peroxidase (HRP)-conjugated secondary antibodies were from Jackson ImmunoResearch (1:5000). Detection of protein bands was carried out using chemiluminescence (EMD Millipore) on a LAS-3000 Imager (FUJIFILM UK Ltd. System).

Calculation of TCGA Protein Profiles

BCL-2 protein profiles (BAK, BAX, BCL2 and BCL(X)L) were calculated for the 845 TCGA patients by using simple linear regression to fit the 25th and 75th percentile of the protein levels of the TCGA patients (RPPA) to the 25th and 75th percentile of the protein levels of our BREAST-PREDICT cohort after excluding extreme outliers (see statistics for outlier calculations). In a first step, protein profiles of TNBC TCGA patients were matched to the TNBC profiles of the BREAST-PREDICT cohort. The fitted linear functions were then applied to calculate the protein profiles of the remaining non-TNBC patients of the TCGA cohort. Protein levels for different antibodies used in the TCGA for BAK (Bak-R-E and Bak-R-C) and BCL(X)L (Bcl-xL-R-C and Bcl-xL-R-V) were merged. We did not find a statistical difference in the distribution of protein levels between the respective antibodies (not shown).

PAM50 subtypes and proliferation score analysis

The PAM50 subtype [27] of the TCGA patients was determined using the ‘*genefu*’ R-Package [28] and mRNA expression levels (mRNA SeqV2). The proliferation score [29] was determined by averaging the normalized expression of eleven genes (RNASeq: BIRC5, CCNB1, CDC20, CDCA1, CEP55, KNTC2, MKI67, PTTG1, RRM2, TYMS, UBE2C) as described by Nielsen *et al.* [29].

DR_MOMP

DR_MOMP was employed as previously described [10, 13, 11] and run with Matlab R2007b (V.7.5.0.342; The MathWorks, USA). Details of the model are described in the Supplementary Methods of Lindner *et al.* [10]. Briefly, the stress dose required to induce MOMP in a cell was determined by mathematically modelling reversible protein binding of the pro- and anti-apoptotic proteins BAK, BAX, BIM, BCL2, BCL(X)L, MCL1,

PUMA, NOXA and VDAC2 based on mass action kinetics [10]. BIM and PUMA are modelled to activate BAK and BAX. BAX and BAK are modelled to subsequently form homo-dimers and higher oligomers. Pores are defined as BAK and BAX hexamers and higher oligomers [10]. MOMP is assumed to occur if at least 10% of total BAK and BAX are associated in pores as determined previously [10]. Levels BAK, BAX, BCL2, BCL(X)L, MCL1 were used as input to calculate the DR_MOMP stress dose. The TCGA dataset did not include MCL1 protein levels and values were set to zero for the calculation of the DR_MOMP stress dose. In the TNBC BREAST-PREDICT cohort, setting MCL1 levels to 0 nM led to a modest, on average 8% reduction of the DR_MOMP stress dose. If ranked according to the stress dose, the patients' ranking did not change considerably (patients 1 and 12 swapped the 4th and 5th rank, and patients 10 and 11 swapped the 10th and 11th rank). The calculated stress dose required to induce MOMP was normalised in TNBC patients from the TCGA cohort by determining the z-score, excluding extreme outliers. The z-score in TNBC served as a reference for other breast cancer subtypes.

Statistics

Employed statistical tests are stated with the p-value (p) for each analysis. Statistical significance was considered with $p < 0.05$. Survival analyses were performed using the 'survival' package (V.2.38–3) in R (V.3.2.3, The R Foundation). Statistically significant differences between OS curves were determined using log-rank tests (logrank). We computed hazard ratios (HR) and 95% confidence intervals (CI) using unadjusted and multivariate Cox proportional hazards models to estimate the relative risks of death. Statistical significance was determined using Wald tests (Wald). The proportional hazards assumption (PHA) was tested by using the *cox.zph* function. Violation of the PHA were accounted by integrating the time-transform functions ' $tt(BCL2) = BCL2 * time$ ' into the cox models (Table 2). Extreme outliers ($< Q_1 - 3(Q_3 - Q_1)$ and $> Q_3 + 3(Q_3 - Q_1)$, with $Q_1 = 25^{th}$, $Q_2 = 50^{th}$ and $Q_3 = 75^{th}$ percentile) were excluded for calculating protein profiles, mean or median values. Bootstrapping was applied to estimate the CI of the median of a dataset (bootstrap 95%CI). Datasets were resampled with replacements with the length of the resample being 100 times the original length. After the median was determined, this routine was repeated 100 times. The 0.025 and 0.975 quantiles of the computed medians were used as the 95% CI.

Results

We determined BCL-2 family of protein profiles in fresh-frozen primary tumour samples from histopathologically confirmed and non-metastatic, female TNBC patients. Patient information and tumor pathology characteristics are provided in Supplementary Table S1. Protein levels of BAK, BAX, BCL2, BCL(X)L and MCL1 were quantified by quantitative Western blotting. To determine absolute levels of BAK, BAX, BCL2, BCL(X)L and MCL1, protein concentrations were normalized to HeLa cells in which BCL-2 protein levels were previously quantified [10]. Pro- and anti-apoptotic BCL-2 family proteins were heterogeneously expressed in individual tumour samples (Figure 1A). We found a median level of 585 nM (bootstrap 95% CI 95-1,143 nM) and 396 nM (bootstrap 95% CI 218-495 nM) for the pro-apoptotic proteins BAK and BAX respectively. We found a median level of 2,037 nM (bootstrap 95% CI 750-3,542 nM), 0 nM (bootstrap 95% CI 0-37 nM) and 7 nM (bootstrap 95% CI 0-34 nM) for the anti-apoptotic proteins BCL2, BCL(X)L and MCL1, respectively. BAK, BAX and MCL1 levels of the TNBC samples were not differently expressed compared to colon or rectal cancer patients in which levels were previously determined by the identical method (Wilcoxon rank-sum test) [10]. BCL2 was significantly higher expressed (Wilcoxon rank-sum test $p < 0.01$) in the TNBC tissue compared to colon or rectal cancer tissue (median = 595 nM; bootstrap 95%CI 195-840 nM). In contrast, BCL(X)L levels in the TNBC samples were significantly lower (Wilcoxon rank-sum test $p = 0.02$) compared to colon and rectal cancer tissue (median = 19 nM; bootstrap 95% CI 5-64 nM). None of the individual proteins were associated with clinical outcome (not shown; Cox models, Wald test $p = 0.3-0.9$).

We employed DR_MOMP [10] to calculate the stress dose required to induce mitochondrial outer membrane permeabilisation (MOMP) in each tumour sample as indicator of apoptosis sensitivity, by using the determined BCL-2 protein profiles as model inputs (Figure 1B). We found considerable differences in the DR_MOMP stress dose among TNBC tumour samples (Figure 1C). It was independent of tumour grade or TN-staging (Figure 1D). Analysis of clinical follow up by determining 5-year disease-free survival (DFS) and breast cancer-related overall survival (OS) suggested that the stress dose was not significantly associated with clinical outcome, as both very high and very low stress doses were observed in patients with unfavourable clinical outcome (Figure 1C).

The above findings suggested that apoptosis signaling through BCL-2 family proteins was not indicative of clinical outcome in TNBC, or may contribute to clinical outcome only in specific molecular subtypes of breast

cancer. To validate and further explore these findings in an external cohort, we inferred protein expression data of 845 patients from the TCGA cohort that included 91 TNBC, 590 ER/PR+ and 127 human epidermal growth factor receptor 2 positive (HER2+) samples (Figure 2A). A total of 74 patients were removed from analysis (Figure 2A; see Materials and Methods).

BCL2 protein profiles of the TNBC patients of the TCGA cohort were first matched fitted to profiles of the TNBC BREAST-PREDICT cohort by linear regression as described in Materials and Methods. The fitted functions were then applied to calculate protein profiles for the remaining, non-TNBC TCGA patients. Analysis of BCL-2 profiles did not reveal major differences in BAX, BAK, and BCL(X)L levels between TNBC, ER/PR+ and HER2+ breast cancer (Figure 2B). Protein levels of BCL2 in ER/PR+ breast cancer further exceeded those seen in TNBC (Figure 2B), confirming previous observations that ER/PR+ breast cancer overexpresses BCL2 [18, 19]. There was no MCL1 protein levels available in the TCGA cohort and levels were set to 0 nM for DR_MOMP.

Calculation of the DR_MOMP stress dose revealed a median of 2,286 nM (bootstrap 95% CI 2,134-2,377 nM) across all breast cancers patients. We next performed a data normalisation step by calculating z-scores of the DR_MOMP stress dose (MOMP score), with TNBC as reference cohort. Previously, the mean MOMP score (= 0) was identified as an excellent threshold to differentiate colorectal cancer patients with favourable and unfavourable clinical outcome [11]. We did not observe a statistical difference in MOMP score among stage I-IV patients (one way ANOVA, $p = 0.11$; Figure 2C), confirming our observations in the smaller BREAST-PREDICT cohort. MOMP scores were significantly lower in TNBC when compared to ER/PR+ ($p < 0.0001$) and HER+ tumours ($p < 0.001$; Tukey HSD post-hoc ANOVA; Figure 2D), suggesting impaired BCL2-dependent apoptosis particularly in these types of breast cancer. Analysis of PAM50 molecular subtypes [27] in this cohort revealed a high MOMP score in Luminal-A and -B subtypes compared to Basal-like and HER2-enriched patients, reflecting findings observed in ER/PR+ cancers ($p < 0.0001$, Tukey HSD post-hoc ANOVA; Figure 2E).

OS probability across all breast cancers was significant higher in patients with a MOMP score ≤ 0 (logrank $p < 0.01$) and the risk of death was halved (hazard ratio HR 0.48, 95% CI 0.30-0.77; Wald $p < 0.01$) compared to patients with a MOMP score > 0 (Figure 2F). Results were similar after adjusting for tumour stage, age at diagnosis and IHC subtype (HR 0.56, 95% CI 0.33-0.93; Wald $p = 0.03$; Table 1). This finding was in stark

contrast to findings in colorectal cancer, where mortality risk was significantly increased in patients with a MOMP score > 0 [11].

We next explored whether the prognostic potential of the MOMP score depended on the different molecular subtypes investigated, as each molecular subtype is expected to have differences in disease biology. However, we did not find a difference in risk assessment based on MOMP scores among the different receptor-based (IHC) subtypes, i.e. ER/PR+, HER2+ and TNBC subtypes (Figure 2G). Within the PAM50 classification, increasing the score decreased the risk of death by 1/3 per unit in Luminal B patients (Fig 2H; HR 0.67, 95% CI 0.50-0.89, Wald $p < 0.01$). There was no significant association among Luminal A patients (HR 1.04, 95% CI 0.99-1.08, Wald $p = 0.10$). We also tested for a possible interaction between MOMP score and PAM50 molecular subtypes (Supp. Table S4). We found that there was an interaction between the MOMP score and whether or not the cancer was classified as Luminal A (interaction $p = 0.03$) or whether or not the cancer was classified as Luminal B (interaction $p < 0.01$).

Next we addressed the question whether high MOMP scores were also associated with impairment of mitochondrial apoptosis by interrogating levels of cleaved caspase-7 in the TCGA cohort. Cleaved caspase-7 is activated downstream of MOMP and apoptosome formation [30, 31]. Cleaved caspase-3 levels were not available in the TCGA dataset. The Pearson's correlation coefficient between BCL2 and cleaved caspase-7 was negative (-0.10; 95% CI -0.17 - -0.03, $p < 0.01$), and mean levels of cleaved caspase-7 were significantly lower in patients with a MOMP score > 1 compared to patients with a MOMP score ≤ 0 (Figure 3A, $p < 0.0001$, Tukey HSD post-hoc ANOVA). These findings indicated that high MOMP scores were associated with impaired apoptosis execution in breast cancer patients.

We next explored whether the levels of cleaved caspase-7 were associated with lower or higher OS in breast cancer. We hypothesised that at least two scenarios would be possible: a) The ability of cells ability to activate caspase-dependent apoptosis has an adverse effect on clinical outcome. In this scenario, high cleaved caspase-7 levels, similar to low MOMP scores, should associate with unfavourable outcome. This scenario is supported by recent studies suggesting that caspase-dependent apoptosis may trigger compensatory cell proliferation and relapse in breast cancer [32, 33]. b) The ability of cells to activate caspase-dependent apoptosis is associated with improved clinical outcome, but other functions of BCL2 proteins not included in the modelling approach (cell proliferation, gene expression, bioenergetics) also contribute and 'overshadow' the anti-apoptotic function

of BCL2 proteins. In this scenario, cleaved caspase-7 levels may be an alternative prognostic biomarker of clinical outcome.

Interestingly, we found that patients with cleaved caspase-7 levels greater than the mean had a 60% reduced risk of death compared to patients with cleaved caspase-7 levels less or equal than the mean (HR 0.4, 95% CI 0.3-0.7, Wald $p = 0.001$). This suggested that impairment of caspase-dependent apoptosis was indeed associated with poor clinical outcome. In contrast to the MOMP score, the risk associated with the cleaved caspase-7 level was also similar in all PAM50 molecular subtypes (Figure 3C). We did not find evidence of an interaction between cleaved caspase-7 levels and PAM50 subtypes (Luminal A interaction $p = 0.35$; Luminal B interaction $p = 0.50$).

From a quantitative perspective, the anti-apoptotic BCL2 protein was found to be the most abundant BCL-2 family protein in breast cancer, exceeding the levels of pro-apoptotic BAK and BAX which represented the second and third most abundant BCL-2 family proteins (Figures 1A and 2B). We therefore also evaluated the prognostic power of individual BCL2 family proteins. Since we found a strong association between the BCL2 levels and the ER/PR-status, which was previously reported to be time-dependent [34], we tested and accounted for violated the proportional hazards assumption (PHA) in further analysis. Within the TCGA cohort, we found evidence that BCL2 protein levels (cox.zph $p < 0.01$) as well as the MOMP scores (cox.zph $p = 0.03$) violated the PHA (Supplementary Figure S1), suggesting a time-varying effect of BCL2 levels. Levels of cleaved caspase-7 did not violate the PHA (cox.zph $p = 0.91$). BCL2 protein levels above the mean (determined in TNBC patients) had a significantly higher OS compared to levels below the mean (logrank $p < 0.0001$; Supplementary Figure S2). At $t = 0$ years, we found a HR 0.37 (95 % CI 0.23-0.61, Wald $p < 0.0001$; Table 2), but we did not find a significant effect after 5 years (HR 0.83, 95% CI 0.61-1.13). HRs were similar after we adjusted for PAM50 and IHC subtypes (not shown). Levels of BAK (HR 1.14, 95% CI 0.55-2.36, Wald $p = 0.72$), BAX (HR 1.03, 95% CI 0.48-2.19, Wald $p = 0.94$) or BCL(X)L protein (HR 0.61, 95% CI 0.21-1.80, Wald $p = 0.37$) were not prognostic.

Of note, patients with BCL2 protein levels above the mean also had a significantly lower proliferation score (Figure 3D; Wilcoxon rank-sum $p < 0.001$) compared to patients with BCL2 levels below the mean. Patients with high BCL2 protein levels also had lower levels of cleaved caspase 7 (Figure 3E; Wilcoxon rank-sum $p < 0.001$). Analysis of PAM50 molecular subtypes indicated that the association of high BCL2 levels with low cell proliferation might be driven by the Luminal B subtype and not by BCL2 levels itself, since we did not observe

a BCL2-dependent variation of the proliferation score within the Basal, Her2 and Luminal A subtypes (Figure 3F).

In multivariate Cox-models adjusting for tumour stage, IHC subtype and age at diagnosis, we found that cleaved caspase-7 levels and BCL2 protein levels were associated with an approximately 50% reduced mortality risk (cleaved caspase-7 HR 0.58, 95% CI 0.40-0.84, Wald $p < 0.01$; BCL2 HR 0.44 95% 0.26-0.73, Wald $p < 0.01$; Table 2). We next divided patients into groups with cleaved caspase-7 levels greater than the mean (> 0.06 a.U; $n = 365$; Figure 4A) and below the mean ($n = 511$). We further subdivided the latter into patients with BCL2 levels greater (> 0.22 a.U.; $n = 317$) and below the cohort's mean ($n = 194$). We did not find that these BCL2 groups were violating the PHA (cox.zph $p = 0.08$ and cox.zph $p = 0.40$, respectively). Focusing on long-term survival (5-10 years, $n = 186$ patients), we found that patients with high BCL2 levels and low cleaved caspase-7 levels had a 7-fold increased risk of death (HR 7.0, 95% CI 1.5-32.2, Wald $p = 0.01$), and that patients with low BCL2 and low cleaved caspase-7 levels were 11-times more likely to die (HR 11.3, 95% CI 2.2-58.2, Wald- $p < 0.01$), compared to patients with high cleaved caspase-7 levels. Of note, we also found that PAM50 subtypes were scattered across the three groups (Figure 4B). 60% of Her2-enriched and 62% Basal-like patients were in the high cleaved caspase-7 level group. 61% of Luminal A patients were in the group with low cleaved caspase-7 levels and high BCL2 protein levels.

Discussion

The ability of cancer cells to induce the BCL-2 family-controlled mitochondrial apoptosis pathway, when analysed by quantitative systems and computational modelling approaches such as DR_MOMP, was shown to be a reliable indicator of genotoxic therapy responses in colon cancer cells [10], and an excellent biomarker for favourable clinical outcome in colorectal cancer patients [10, 13, 11]. Employing an identical quantitative tissue profiling approach in fresh-frozen tissue material as employed in previous investigations [10, 13], we found that the protein levels of anti-apoptotic BCL2 were about 5-fold higher in breast cancer tissues when compared to colon or rectal tumours, or when compared to other solid tumours such as glioblastoma (Supplementary Figure S3). This was not the case for any of the other pro- or anti-apoptotic BCL-2 family proteins investigated. Moreover, we found that high BCL2 protein levels and, consequently high MOMP scores were associated with favourable (rather than unfavourable) clinical outcome in breast cancer. This association was particularly strong in the ER/PR+ cohort and Luminal B PAM50 subtype. These findings are in agreement with previous studies

showing that high levels of BCL2 expression are associated with favourable clinical outcome and enriched in ER/PR+ breast cancer [14, 15, 17, 16], but are counter-intuitive when considering the known roles of BCL2 family proteins in cell death regulation and chemo- and radiotherapy responses. Because most breast cancer patients in the cohorts studied were treated with chemo- and radiotherapy or targeted therapies, it is possible that treatments reduced BCL2 levels particularly in high BCL2 expressing and potentially BCL2-dependent breast cancers. However studies in the neoadjuvant setting suggested that alterations in BCL2 levels did not correlate with response to treatment [35-37], or that BCL2 levels increased in responders [38]. In line with an anti-apoptotic role of BCL2, we observed that tumours with high levels of BCL2 protein had a reduced proficiency to activate the mitochondrial apoptosis pathway, as evidence by reduced caspase-7 activation. However, we also observed that tumours with low levels of cleaved caspase-7 were associated with unfavourable clinical outcome in cancer patients. Collectively, this suggested that BCL2 may exert other activities that contribute to favourable clinical outcome such as regulation of cell proliferation, gene expression, or bioenergetics [22-24]. In this context, we also observed a strong negative correlation between high BCL2 protein levels and cell proliferation scores. Previous studies have shown that BCL-2 is able to delay G(0)-G(1) cell cycle transition [26], and potentially has additional effects in S phase [25], the mechanisms of which are however largely unexplored. Interestingly, BCL2 is also localised to the nuclear envelope [39], and has recently been shown to exert extra-mitochondrial effects by regulating gene expression [24]. Alternatively high BCL2 levels are merely an indicator of a subtype of breast cancer that has a favourable clinical prognosis and is responsive to ER targeted-therapy [40, 41]. In both scenarios, these biological activities would dominate over BCL2's anti-apoptotic activity in terms of long-term prognosis. To identify improved prognostic signatures, we combined cleaved caspase-7 and BCL2 protein levels. Patients with impaired apoptosis execution indicated by low cleaved caspase-7 and high proliferation indicated by low BCL2 protein levels had the lowest rate of OS, and were 3-times more likely to die. Patients with high BCL2 protein levels did not show a different OS within the first 5-years of follow-up, however differences in survival became evident after this period. We observed that the effect of BCL2 levels was varying by time but that levels of cleaved caspase-7 did not. Time-dependence of the ER status was previously demonstrated [42, 43, 34], and the 2 year peak in mortality rate of ER-negative cancer patients after diagnosis was used to explain the time-dependency [34]. In our study the subgroup with high BCL2 levels and low cleaved caspase 7 levels mostly consisted of ER+ (Luminal A and B) cancer. Our study suggests that breast cancers with high levels of cleaved caspase 7 have a higher sensitivity to (neo-)adjuvant therapy, therefore these patients may have a good prognosis for both short- and long-term survival. Patients with

low cleaved caspase 7 but high BCL2 protein levels may show higher survival after surgery, since their cancer is less invasive and slower proliferating [18, 15, 19], however the impairment of apoptosis might be of disadvantage for long-term survival. This disadvantage could be potentially addressed by targeting caspase activation or MOMP with apoptosis sensitisers including IAP antagonists [44] and BCL-2 antagonists.

BCL2 displays a high binding affinity for activated BAX [45] and most BH3-only proteins [46]. A 'MODE 1' prevention of apoptosis (sequestering of direct activators of BAK and BAX) was described to be easily disrupted by BCL2-antagonists [47]. Drugs targeting BCL2, such as Venetoclax/ABT-199 were shown to sensitize ER-positive breast cancer cells to tamoxifen in mouse xenograft models [48], presumably by disrupting the binding of BCL2 to the pro-apoptotic BH3-only protein BIM [49, 48]. Indeed, we found a Pearson correlation coefficient = 0.52 (95% CI 0.46-0.57, $p < 0.0001$) between BIM and BCL2 protein levels among the samples of the TCGA cohort and both markers were associated with decreased risk in a univariate Cox-model and no statistically significant interaction between BCL2 and BIM protein levels was observed (interaction $p = 0.07$, Supplementary Table S5). Moreover, in contrast to BAX, BAK is held in check predominantly by BCL(X)L and MCL1 [50]. Due to the low levels of BCL(X)L and MCL1 in breast cancer patients, BAK should be readily available to induce apoptosis subsequent to a stress- or therapy-induced activation of BH3-only proteins. In most *in vitro* and *in vivo* systems, activation of BAK is sufficient to induce apoptosis in the absence of BAX [51, 52].

Collectively, our study suggested that the protein levels of BCL2 (as a potential indicator of cell proliferation and/or molecular subtype), and levels of cleaved caspase 7 (as an indicator for apoptosis impairment) when combined may deliver a novel prognostic signature across all breast cancers. Low levels of both proteins are indicative for highly unfavourable clinical outcome, independent of patients' age, tumour stage and PAM50 classification.

List of abbreviations

a.U., arbitrary unit; ANOVA, analysis of variance; BAK, BCL2 antagonist/killer 1 (BAK1); BAX, BCL2 associated X, apoptosis regulator (BCL2L4); BCL2, B-cell lymphoma 2; BCL(X)L, B-cell lymphoma-extra large (BCL2L1); BIM, Bcl-2 interacting mediator of cell death (BCL2L11); BH3, BCL2 homology 3rd domain;

CI, confidence interval; DFS, disease-free survival; ER, estrogen receptor 1 (ESR1); HER2, Receptor tyrosine-protein kinase erbB-2 (ERBB2); HR, hazard ratio; IAP, inhibitor of apoptosis; IHC, immunohistochemistry; MCL1, Myeloid cell leukemia sequence 1 (BCL2L3); MOMP, mitochondrial outer membrane permeabilisation; nM, nanomolar (10^{-9} mol/L); NOXA, horbol-12-Myristate-13-Acetate-Induced protein 1 (PMAIP1); OS, overall survival; p, probability value; PAM50, 50-gene signature; PHA, proportional hazards assumption; PR, progesterone receptor (PGR); PUMA, p53 up-regulated modulator of apoptosis (BBC3); RPPA, reverse protein phase array; TCGA, The Cancer Genome Atlas; TNBC, triple negative breast cancer; TNM, tumour/lymph node/metastasis staging system; Tukey HSD, Tukey Honest significant differences post-hoc test; VDAC2, voltage dependent anion channel 2; Wald p, Wald-test probability value.

Declarations

Ethics approval and consent to participate: For the BREAST-PREDICT cohort, informed consents were collected following ethical approval from Beaumont Hospital Medical Research Ethics Committee.

Availability of data and material: Data generated or analysed during this study are available in the supplementary tables 1 and 3.

Competing Interests: AUL and JHMP filed a patent application at the EPO (Appl.No. EP20120166187 and EP20130728324), USPTO (Appl.No. 14/397697) and WIPO (Appl.No. PCT/EP2013/059051). The other authors declare no further conflict of interest.

Funding: Funding support was provided by the Irish Cancer Society Collaborative Cancer Research Centre grant, BREAST-PREDICT (to J.H.M.P. and W.M.G.) and a Science Foundation Ireland Investigator Award to J.H.M.P. (13/IA/1881).

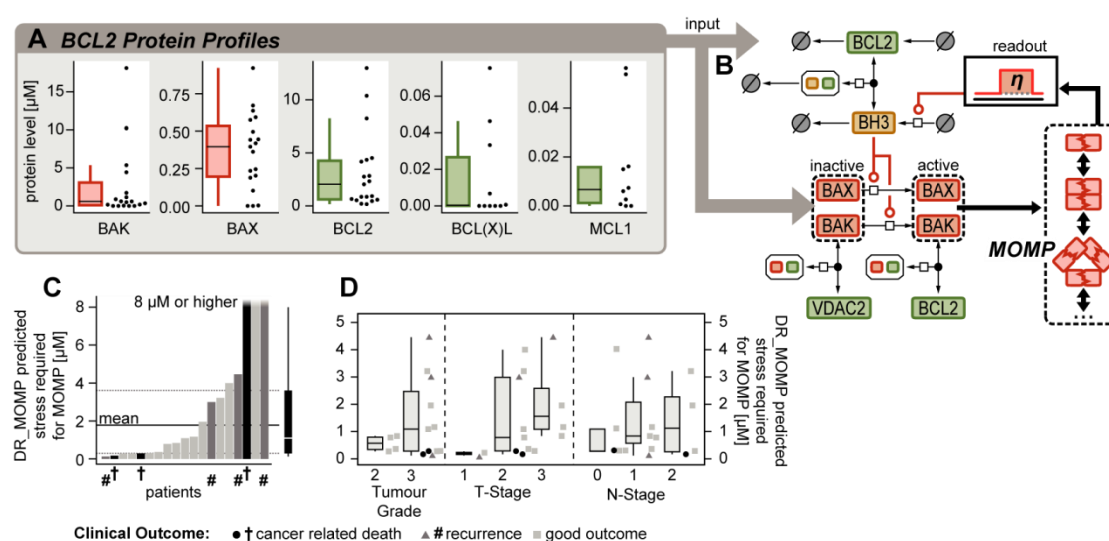
Authors' contributions: A.U.L. and F.L. generated data. A.U.L. and A.R. performed data analysis. D.V., B.M.M., A.D.K.H. and L.S.Y. acquired clinical data and provided material. J.H.M.P. and W.M.G. conceived this study and provided funding. J.H.M.P. and L.S.Y. supervised the study. A.U.L. and J.H.M.P. wrote the manuscript. All authors read, reviewed and approved the final manuscript.

Acknowledgements: We are grateful to the patients and their families who participated in this study. We thank Ciaran de Chaumont and Lance Hudson for technical assistance, Ramphul Eimear, Dr. Róisín M. Dwyer and

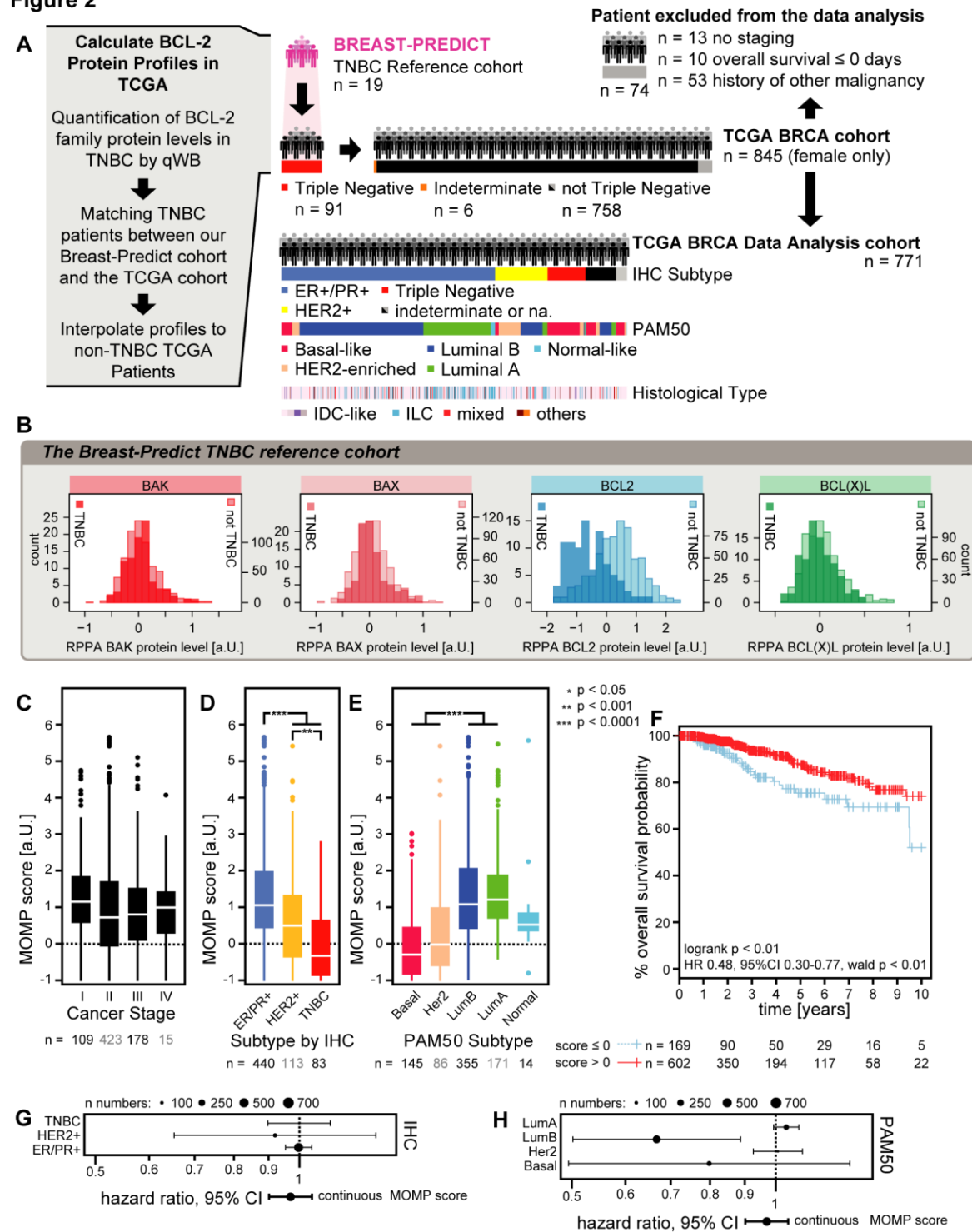
Prof. Michael J. Kerin for sharing of samples, and Dr Triona Ni Chonghaile for critical review of the manuscript. The results published here are in part based upon data generated by the TCGA Research Network: <http://cancergenome.nih.gov> which we also gratefully acknowledge.

Figure & Figure Legends

Figure 1

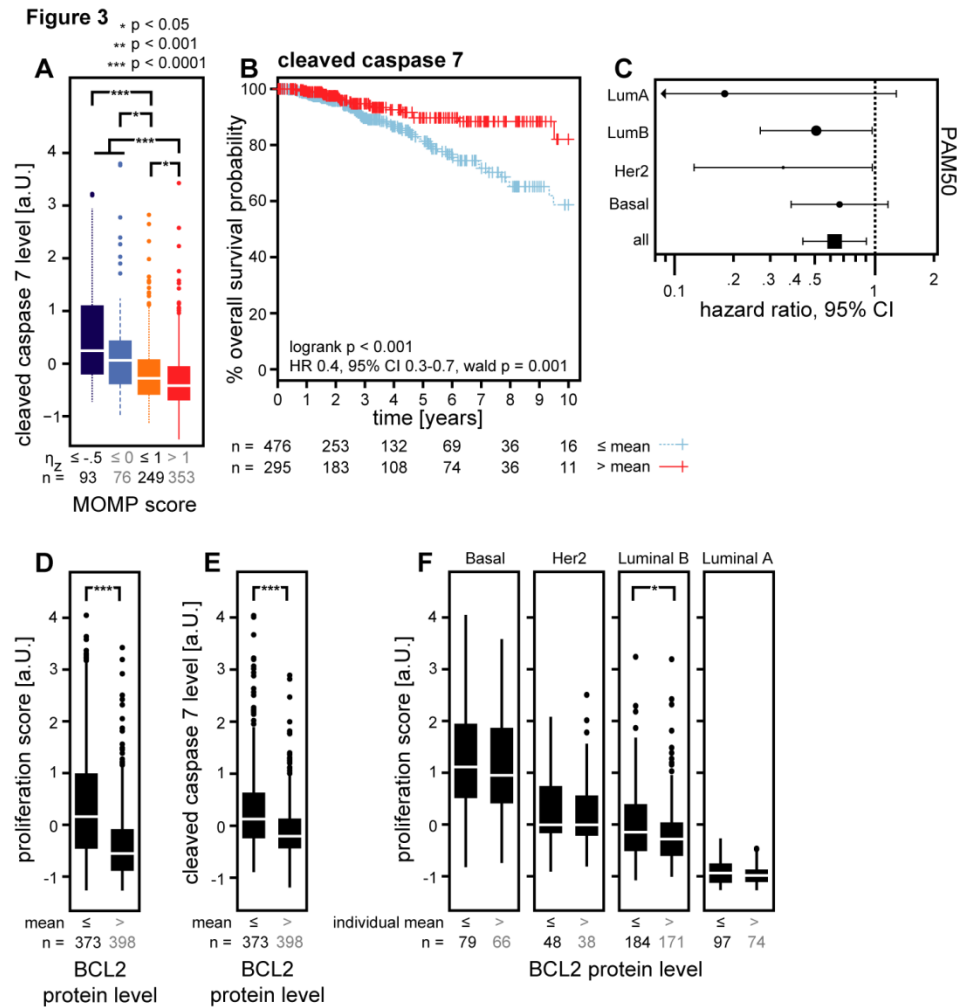


BCL-2 family protein profiling and risk score calculations in TNBC patients. (A) BAK, BAX, BCL2, BCL(X)L and MCL1 protein levels as determined by quantitative Western Blotting in 19 TNBC patients from the BREAST-PREDICT cohort. (B) Protein profiles were used as input for DR_MOMP [10] to determine (C) the stress dose required to induce apoptosis in the patients' cancer samples. (D) The stress doses were not significantly different among different tumour grades and stages.

Figure 2

DR_MOMP analysis of the TCGA BRCA cohort. (A) Workflow and patient criteria for TCGA analysis. TNBC patients of the TCGA cohort were matched with the TNBC BREAST-PREDICT cohort to calculate BCL2 protein profiles among TCGA patients. (B) BCL2 expression varied between the IHC subtype among TCGA patients. (C) The MOMP score was not different among the various cancer stages, but varied (D) among the IHC and (E) PAM50 molecular subtypes (Tukey HSD post-hoc ANOVA). (F) Patients with a MOMP score

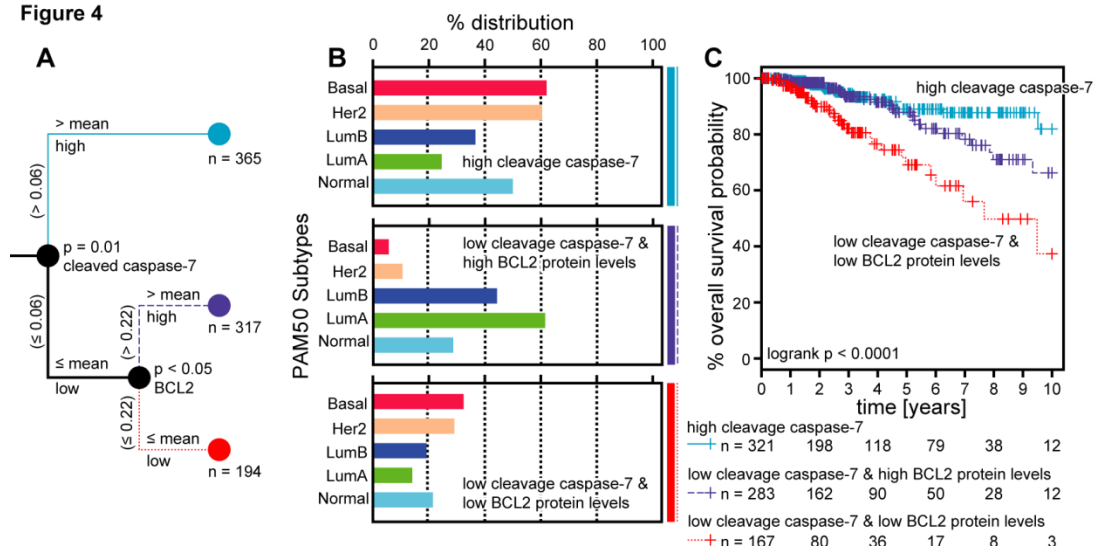
> 0 had significantly higher overall survival compared to patients with MOMP score ≤ 0 (logrank-test). **(G)** The MOMP score was not a prognostic marker within the various IHC subtypes, **(H)** but showed prognostic properties among Luminal B patients (Cox models, wald-p test < 0.01).



High cleaved caspase-7 levels are associated with a decreased risk. **(A)** Breast cancer samples with a MOMP score > 0 had significantly lower levels of cleaved caspase-7 compared to samples with a MOMP score ≤ 0 (Tukey HSD post-hoc ANOVA). **(B)** Patients with cleaved caspase-7 levels $> \text{mean}$ (0.11 A.U.) had significantly higher OS compared to patients with cleaved caspase-7 levels $\leq \text{mean}$ (logrank test). **(C)** Testing of the prognostic value of cleaved caspase-7 levels in PAM50 subtypes (Cox models, wald-p test). Patients with BCL2 protein levels $> \text{mean}$ (0.22 A.U.) had significantly **(D)** lower PAM50 proliferation scores and **(E)** lower levels of cleaved caspase-7 compared to patients with BCL2 protein levels $\leq \text{mean}$ (Wilcoxon Rank Sum). **(F)** There was no difference in the proliferation score within the various PAM50 subtypes, comparing samples

with BCL2 protein levels $>$ individual means and \leq individual means (-0.50 Basal, -0.44 Her2, 0.47 Luminal B, 0.64 Luminal A; Wilcoxon Rank Sum).

Figure 4



The combination of BCL2 and cleaved caspase-7 levels is a promising prognostic biomarker. (A) Patients were divided into those with high (> 0.06 A.U.; solid line, blue) and low cleaved caspase-7 levels. We further subdivided the latter cohort according to high (> 0.22 A.U.; dashed line, purple) and low BCL2 protein levels (dotted line, red). (B) Distribution of the PAM50 subtypes among the defined patient subgroups. (C) Kaplan-Meier analysis of patient subgroups. Patients with low cleaved caspase-7 and low BCL2 proteins levels had lower OS compared to patients with high BCL2 or high cleaved caspase-7 levels (logrank-test).

References

1. Hanahan D, Weinberg RA. Hallmarks of cancer: the next generation. *Cell*. 2011;144(5):646-74. doi:10.1016/j.cell.2011.02.013.
2. Johnstone RW, Ruefli AA, Lowe SW. Apoptosis: a link between cancer genetics and chemotherapy. *Cell*. 2002;108(2):153-64.
3. Delbridge AR, Grabow S, Strasser A, Vaux DL. Thirty years of BCL-2: translating cell death discoveries into novel cancer therapies. *Nature reviews Cancer*. 2016;16(2):99-109. doi:10.1038/nrc.2015.17.
4. Lakhani SA, Masud A, Kuida K, Porter GA, Jr., Booth CJ, Mehal WZ et al. Caspases 3 and 7: key mediators of mitochondrial events of apoptosis. *Science*. 2006;311(5762):847-51. doi:10.1126/science.1115035.
5. Strasser A, Harris AW, Jacks T, Cory S. DNA damage can induce apoptosis in proliferating lymphoid cells via p53-independent mechanisms inhibitable by Bcl-2. *Cell*. 1994;79(2):329-39.
6. Huang DC, Cory S, Strasser A. Bcl-2, Bcl-XL and adenovirus protein E1B19kD are functionally equivalent in their ability to inhibit cell death. *Oncogene*. 1997;14(4):405-14. doi:10.1038/sj.onc.1200848.

7. Hector S, Prehn JH. Apoptosis signaling proteins as prognostic biomarkers in colorectal cancer: a review. *Biochimica et biophysica acta*. 2009;1795(2):117-29. doi:10.1016/j.bbcan.2008.12.002.
8. Zeestraten EC, Benard A, Reimers MS, Schouten PC, Liefers GJ, van de Velde CJ et al. The prognostic value of the apoptosis pathway in colorectal cancer: a review of the literature on biomarkers identified by immunohistochemistry. *Biomarkers in cancer*. 2013;5:13-29. doi:10.4137/BIC.S11475.
9. Juin P, Geneste O, Gautier F, Depil S, Campone M. Decoding and unlocking the BCL-2 dependency of cancer cells. *Nature reviews Cancer*. 2013;13(7):455-65. doi:10.1038/nrc3538.
10. Lindner AU, Concannon CG, Boukes GJ, Cannon MD, Llambi F, Ryan D et al. Systems analysis of BCL2 protein family interactions establishes a model to predict responses to chemotherapy. *Cancer research*. 2013;73(2):519-28. doi:10.1158/0008-5472.CAN-12-2269.
11. Lindner AU, Salvucci M, Morgan C, Monsefi N, Resler AJ, Cremona M et al. BCL-2 system analysis identifies high-risk colorectal cancer patients. *Gut*. 2016. doi:10.1136/gutjnl-2016-312287.
12. Federico Lucantoni, Andreas Lindner, Norma O'Donovan, Heiko Dussmann, Prehn J. Systems modeling accurately predicts responses to genotoxic agents and their synergism with BCL-2 inhibitors in triple negative breast cancer cells. *Cell Death & Disease*. 2018 Jan 19;9(2):42. doi:10.1038/s41419-017-0039-y.
13. Flanagan L, Lindner AU, de Chaumont C, Kehoe J, Fay J, Bacon O et al. BCL2 protein signalling determines acute responses to neoadjuvant chemoradiotherapy in rectal cancer. *J Mol Med (Berl)*. 2015;93(3):315-26. doi:10.1007/s00109-014-1221-7.
14. Gasparini G, Barbareschi M, Doglioni C, Palma PD, Mauri FA, Boracchi P et al. Expression of bcl-2 protein predicts efficacy of adjuvant treatments in operable node-positive breast cancer. *Clinical cancer research : an official journal of the American Association for Cancer Research*. 1995;1(2):189-98.
15. Lipponen P, Pietilainen T, Kosma VM, Aaltomaa S, Eskelinen M, Syrjanen K. Apoptosis suppressing protein bcl-2 is expressed in well-differentiated breast carcinomas with favourable prognosis. *The Journal of pathology*. 1995;177(1):49-55. doi:10.1002/path.1711770109.
16. van Slooten HJ, Clahsen PC, van Dierendonck JH, Duval C, Pallud C, Mandard AM et al. Expression of Bcl-2 in node-negative breast cancer is associated with various prognostic factors, but does not predict response to one course of perioperative chemotherapy. *British journal of cancer*. 1996;74(1):78-85.
17. Hellemans P, van Dam PA, Weyler J, van Oosterom AT, Buytaert P, Van Marck E. Prognostic value of bcl-2 expression in invasive breast cancer. *British journal of cancer*. 1995;72(2):354-60.
18. Silvestrini R, Veneroni S, Daidone MG, Benini E, Boracchi P, Mezzetti M et al. The Bcl-2 protein: a prognostic indicator strongly related to p53 protein in lymph node-negative breast cancer patients. *Journal of the National Cancer Institute*. 1994;86(7):499-504.
19. Leek RD, Kaklamanis L, Pezzella F, Gatter KC, Harris AL. bcl-2 in normal human breast and carcinoma, association with oestrogen receptor-positive, epidermal growth factor receptor-negative tumours and in situ cancer. *British journal of cancer*. 1994;69(1):135-9.
20. Knight WA, Livingston RB, Gregory EJ, McGuire WL. Estrogen receptor as an independent prognostic factor for early recurrence in breast cancer. *Cancer research*. 1977;37(12):4669-71.
21. Dong L, Wang W, Wang F, Stoner M, Reed JC, Harigai M et al. Mechanisms of transcriptional activation of bcl-2 gene expression by 17beta-estradiol in breast cancer cells. *The Journal of biological chemistry*. 1999;274(45):32099-107.
22. Sheridan C, Delivani P, Cullen SP, Martin SJ. Bax- or Bak-induced mitochondrial fission can be uncoupled from cytochrome C release. *Molecular cell*. 2008;31(4):570-85. doi:10.1016/j.molcel.2008.08.002.

23. Kilbride SM, Prehn JH. Central roles of apoptotic proteins in mitochondrial function. *Oncogene*. 2013;32(22):2703-11. doi:10.1038/onc.2012.348.
24. Wu X, Zhang LS, Toombs J, Kuo YC, Piazza JT, Tuladhar R et al. Extra-mitochondrial prosurvival BCL-2 proteins regulate gene transcription by inhibiting the SUFU tumour suppressor. *Nature cell biology*. 2017;19(10):1226-36. doi:10.1038/ncb3616.
25. Belanger S, Cote M, Lane D, L'Esperance S, Rancourt C, Piche A. Bcl-2 decreases cell proliferation and promotes accumulation of cells in S phase without affecting the rate of apoptosis in human ovarian carcinoma cells. *Gynecologic oncology*. 2005;97(3):796-806. doi:10.1016/j.ygyno.2005.02.018.
26. Janumyan YM, Sansam CG, Chattopadhyay A, Cheng N, Soucie EL, Penn LZ et al. Bcl-xL/Bcl-2 coordinately regulates apoptosis, cell cycle arrest and cell cycle entry. *The EMBO journal*. 2003;22(20):5459-70. doi:10.1093/emboj/cdg533.
27. Parker JS, Mullins M, Cheang MC, Leung S, Voduc D, Vickery T et al. Supervised risk predictor of breast cancer based on intrinsic subtypes. *Journal of clinical oncology : official journal of the American Society of Clinical Oncology*. 2009;27(8):1160-7. doi:10.1200/JCO.2008.18.1370.
28. Gendoo DM, Ratanasirigulchai N, Schroder MS, Pare L, Parker JS, Prat A et al. Genefu: an R/Bioconductor package for computation of gene expression-based signatures in breast cancer. *Bioinformatics*. 2016;32(7):1097-9. doi:10.1093/bioinformatics/btv693.
29. Nielsen TO, Parker JS, Leung S, Voduc D, Ebbert M, Vickery T et al. A comparison of PAM50 intrinsic subtyping with immunohistochemistry and clinical prognostic factors in tamoxifen-treated estrogen receptor-positive breast cancer. *Clinical cancer research : an official journal of the American Association for Cancer Research*. 2010;16(21):5222-32. doi:10.1158/1078-0432.CCR-10-1282.
30. Fernandes-Alnemri T, Takahashi A, Armstrong R, Krebs J, Fritz L, Tomaselli KJ et al. Mch3, a novel human apoptotic cysteine protease highly related to CPP32. *Cancer research*. 1995;55(24):6045-52.
31. Lippke JA, Gu Y, Sarnecki C, Caron PR, Su MS. Identification and characterization of CPP32/Mch2 homolog 1, a novel cysteine protease similar to CPP32. *The Journal of biological chemistry*. 1996;271(4):1825-8.
32. Huang Q, Li F, Liu X, Li W, Shi W, Liu FF et al. Caspase 3-mediated stimulation of tumor cell repopulation during cancer radiotherapy. *Nature medicine*. 2011;17(7):860-6. doi:10.1038/nm.2385.
33. Boland K, Flanagan L, Prehn JH. Paracrine control of tissue regeneration and cell proliferation by Caspase-3. *Cell Death Dis*. 2013;4:e725. doi:10.1038/cddis.2013.250.
34. Dawson SJ, Makretsov N, Blows FM, Driver KE, Provenzano E, Le Quesne J et al. BCL2 in breast cancer: a favourable prognostic marker across molecular subtypes and independent of adjuvant therapy received. *British journal of cancer*. 2010;103(5):668-75. doi:10.1038/sj.bjc.6605736.
35. Makris A, Powles TJ, Dowsett M, Osborne CK, Trott PA, Fernando IN et al. Prediction of response to neoadjuvant chemoendocrine therapy in primary breast carcinomas. *Clinical cancer research : an official journal of the American Association for Cancer Research*. 1997;3(4):593-600.
36. Chang J, Powles TJ, Allred DC, Ashley SE, Clark GM, Makris A et al. Biologic markers as predictors of clinical outcome from systemic therapy for primary operable breast cancer. *Journal of clinical oncology : official journal of the American Society of Clinical Oncology*. 1999;17(10):3058-63. doi:10.1200/JCO.1999.17.10.3058.
37. Faneyte IF, Schrama JG, Peterse JL, Remijnse PL, Rodenhuis S, van de Vijver MJ. Breast cancer response to neoadjuvant chemotherapy: predictive markers and relation with outcome. *British journal of cancer*. 2003;88(3):406-12. doi:10.1038/sj.bjc.6600749.
38. Chang J, Ormerod M, Powles TJ, Allred DC, Ashley SE, Dowsett M. Apoptosis and proliferation as predictors of chemotherapy response in patients with breast carcinoma. *Cancer*. 2000;89(11):2145-52.
39. Krajewski S, Tanaka S, Takayama S, Schibler MJ, Fenton W, Reed JC. Investigation of the subcellular distribution of the bcl-2 oncoprotein: residence in the nuclear envelope,

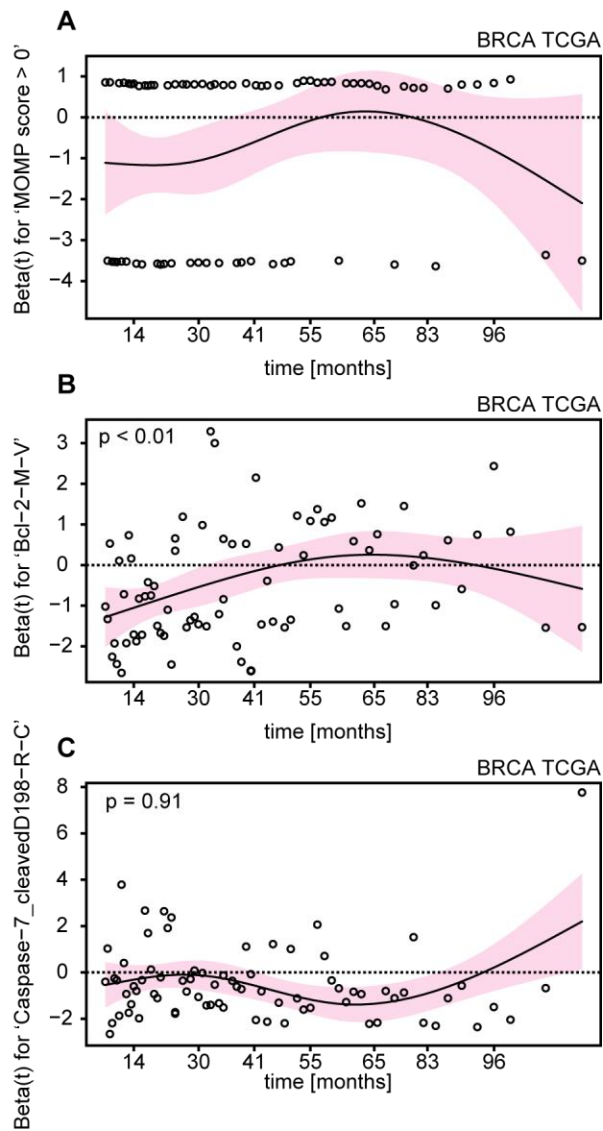
- endoplasmic reticulum, and outer mitochondrial membranes. *Cancer research*. 1993;53(19):4701-14.
40. Bratton MR, Duong BN, Elliott S, Weldon CB, Beckman BS, McLachlan JA et al. Regulation of ERalpha-mediated transcription of Bcl-2 by PI3K-AKT crosstalk: implications for breast cancer cell survival. *International journal of oncology*. 2010;37(3):541-50.
 41. Elledge RM, Green S, Howes L, Clark GM, Berardo M, Allred DC et al. bcl-2, p53, and response to tamoxifen in estrogen receptor-positive metastatic breast cancer: a Southwest Oncology Group study. *Journal of clinical oncology : official journal of the American Society of Clinical Oncology*. 1997;15(5):1916-22. doi:10.1200/JCO.1997.15.5.1916.
 42. Hilsenbeck SG, Ravdin PM, de Moor CA, Chamness GC, Osborne CK, Clark GM. Time-dependence of hazard ratios for prognostic factors in primary breast cancer. *Breast cancer research and treatment*. 1998;52(1-3):227-37.
 43. Anderson WF, Chen BE, Jatoti I, Rosenberg PS. Effects of estrogen receptor expression and histopathology on annual hazard rates of death from breast cancer. *Breast cancer research and treatment*. 2006;100(1):121-6. doi:10.1007/s10549-006-9231-y.
 44. Gyrd-Hansen M, Meier P. IAPs: from caspase inhibitors to modulators of NF-kappaB, inflammation and cancer. *Nature reviews Cancer*. 2010;10(8):561-74. doi:10.1038/nrc2889.
 45. Ku B, Liang C, Jung JU, Oh BH. Evidence that inhibition of BAX activation by BCL-2 involves its tight and preferential interaction with the BH3 domain of BAX. *Cell research*. 2011;21(4):627-41. doi:10.1038/cr.2010.149.
 46. Chen L, Willis SN, Wei A, Smith BJ, Fletcher JI, Hinds MG et al. Differential targeting of prosurvival Bcl-2 proteins by their BH3-only ligands allows complementary apoptotic function. *Molecular cell*. 2005;17(3):393-403. doi:10.1016/j.molcel.2004.12.030.
 47. Llambi F, Moldoveanu T, Tait SW, Bouchier-Hayes L, Temirov J, McCormick LL et al. A unified model of mammalian BCL-2 protein family interactions at the mitochondria. *Molecular cell*. 2011;44(4):517-31. doi:10.1016/j.molcel.2011.10.001.
 48. Vaillant F, Merino D, Lee L, Breslin K, Pal B, Ritchie ME et al. Targeting BCL-2 with the BH3 mimetic ABT-199 in estrogen receptor-positive breast cancer. *Cancer cell*. 2013;24(1):120-9. doi:10.1016/j.ccr.2013.06.002.
 49. Merino D, Khaw SL, Glaser SP, Anderson DJ, Belmont LD, Wong C et al. Bcl-2, Bcl-x(L), and Bcl-w are not equivalent targets of ABT-737 and navitoclax (ABT-263) in lymphoid and leukemic cells. *Blood*. 2012;119(24):5807-16. doi:10.1182/blood-2011-12-400929.
 50. Willis SN, Chen L, Dewson G, Wei A, Naik E, Fletcher JI et al. Proapoptotic Bak is sequestered by Mcl-1 and Bcl-xL, but not Bcl-2, until displaced by BH3-only proteins. *Genes & development*. 2005;19(11):1294-305. doi:10.1101/gad.1304105.
 51. Chittenden T, Harrington EA, O'Connor R, Flemington C, Lutz RJ, Evan GI et al. Induction of apoptosis by the Bcl-2 homologue Bak. *Nature*. 1995;374(6524):733-6. doi:10.1038/374733a0.
 52. Wei MC, Zong WX, Cheng EH, Lindsten T, Panoutsakopoulou V, Ross AJ et al. Proapoptotic BAX and BAK: a requisite gateway to mitochondrial dysfunction and death. *Science*. 2001;292(5517):727-30. doi:10.1126/science.1059108.

Supplementary Figures & Figure Legends for

Low levels of BCL2 and cleaved caspase-7 are indicative of highly unfavourable clinical outcome in breast cancer, independent of patients' age, tumour stage and PAM50 classification

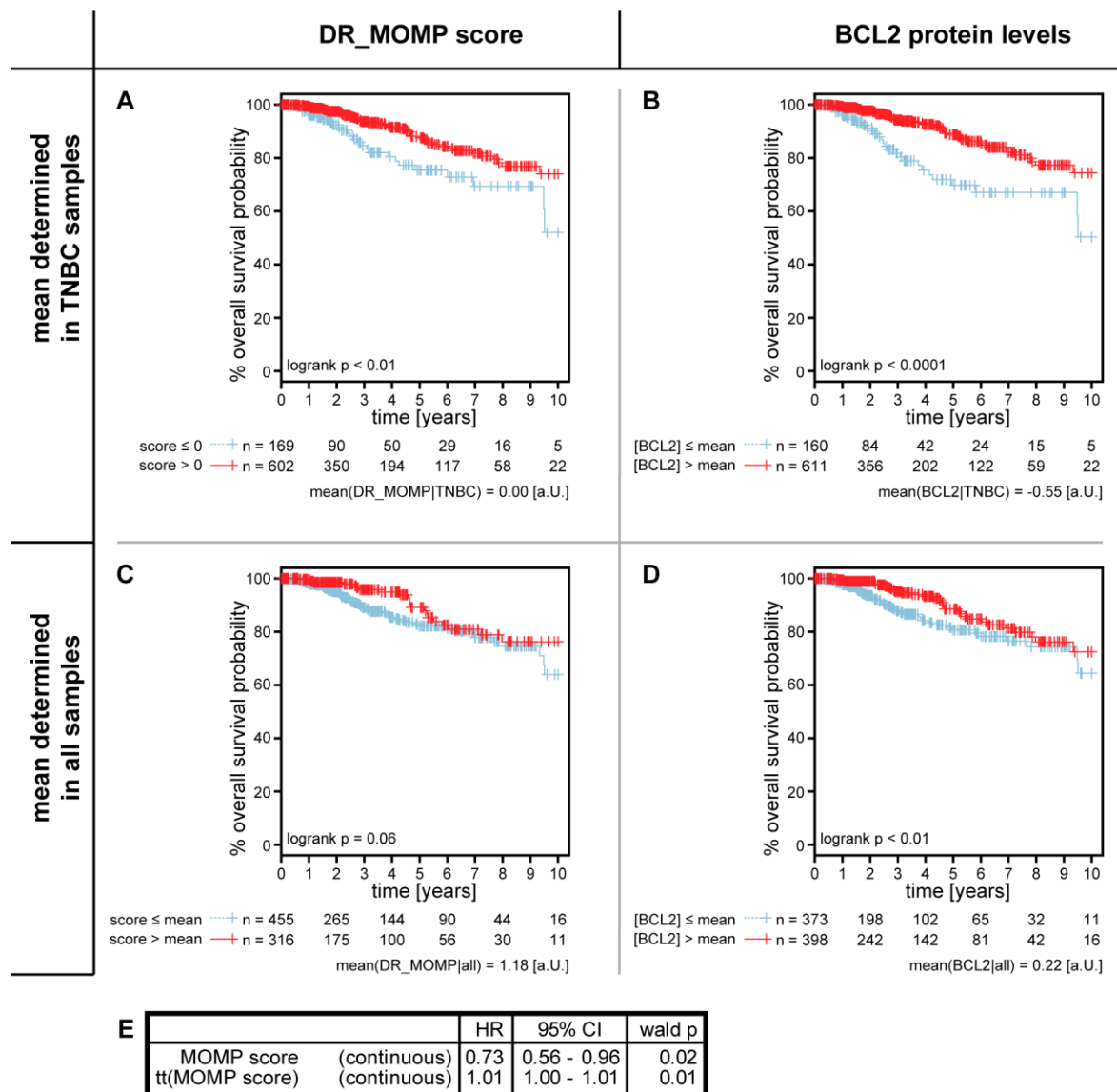
Andreas U. Lindner^{1,2}, Federico Lucantoni^{1,2}, Damir Varešlija³, Alexa Resler^{1,2}, Brona M. Murphy^{1,2}, William M. Gallagher⁴, Arnold D.K. Hill³, Leonie S. Young³, and Jochen H.M. Prehn^{*1,2}

¹Centre for Systems Medicine, ²Department of Physiology and Medical Physics, ³Department of Surgery, Royal College of Surgeons in Ireland, Dublin 2, Ireland. ⁴Cancer Biology and Therapeutics Laboratory, UCD School of Biomolecular and Biomedical Science, UCD Conway Institute, University College Dublin, Belfield, Dublin 4, Ireland.

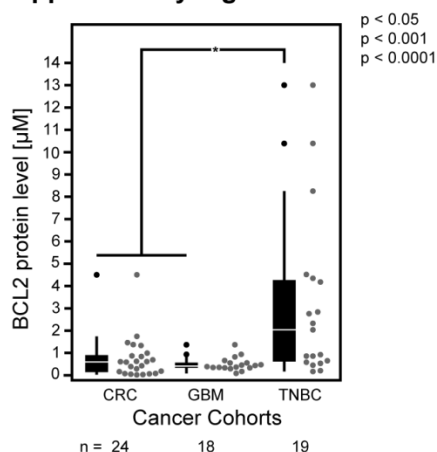
Supplementary Figure S1

Supplementary Figure 1 Test and graphical diagnostics for the proportional hazards assumption for Cox regression models. Scaled Schoenfeld residuals by time for (A) the MOMP score > 0, (B) the BCL2 protein levels and (C) the levels of cleaved caspase-7 from the breast cancer TCGA cohort.

Supplementary Figure S2



Supplementary Figure 2 Kaplan–Meier (logrank-test) and Cox-model analysis of the TCGA cohort using (A,C) the DR_MOMP score and (B,D) BCL2 protein levels, and different mean values as cut-off. Analysis using the means (A) of the DR_MOMP score (0.00 a.U.) and (B) BCL2 protein (-0.55 a.U.) determined in TNBC patients. Analysis using the means (C) of the MOMP_score (1.18 a.U.) and (D) BCL2 protein levels (0.22 a.U.) determined in all patients. (E) Cox-model using the MOMP score as covariate and accounting for its violation of the proportional hazard assumption.

Supplementary Figure S3

Supplementary Figure 3 BCL2 protein levels were found to be significantly higher in triple negative breast cancer (TNBC, Irish Cancer Society BREAST-PREDICT cohort) patients compared to colorectal cancer [1] (CRC) and glioblastoma [2] (GBM) patients ($p < 0.01$; Tukey HSD post-hoc ANOVA).

References

1. Lindner AU, Concannon CG, Boukes GJ, Cannon MD, Llambi F, Ryan D, Boland K, Kehoe J, McNamara DA, Murray F *et al*: Systems analysis of BCL2 protein family interactions establishes a model to predict responses to chemotherapy. *Cancer research* 2013, 73(2):519-528.
2. Murphy AC, Weyhenmeyer B, Schmid J, Kilbride SM, Rehm M, Huber HJ, Senft C, Weissenberger J, Seifert V, Dunst M *et al*: Activation of executioner caspases is a predictor of progression-free survival in glioblastoma patients: a systems medicine approach. *Cell Death Dis* 2013, 4:e629.